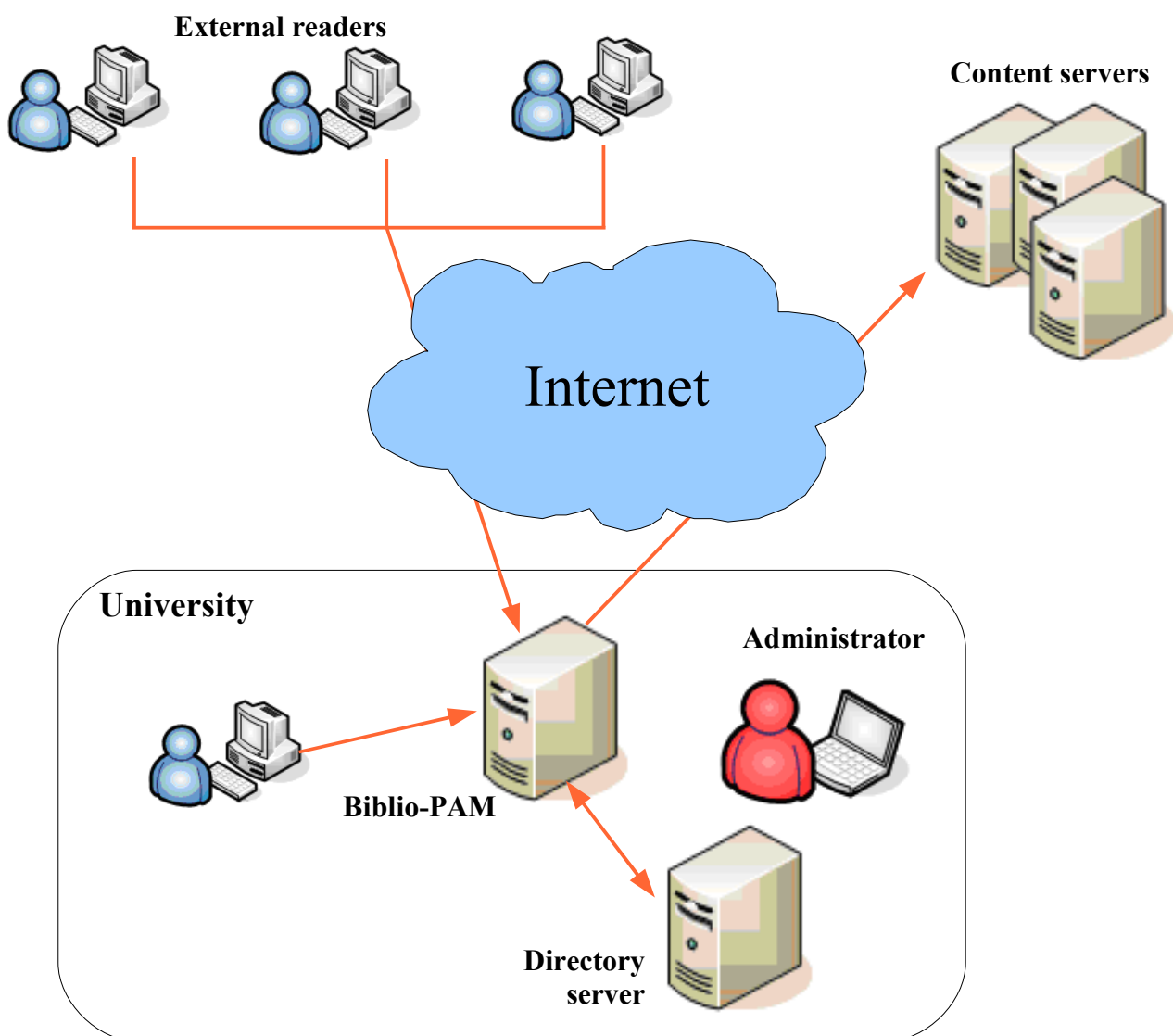


BIBLIO-PAM

Remote access to documentary resources

BIBLIO-PAM provides remote access to the documentary resources of a library, from one's home or from any other Internet connection, via a secured and automatic mechanism which redirects the users' requests. All necessary functionality is included to ensure contractual obligations to the content providers are respected, reserving access to legitimate and referenced readers.



- 🍂 Transparency : No configuration for the reader
- 🍂 Access control : Authentication
- 🍂 Usage statistics
- 🍂 Respect of editor contracts

Working principles

Designed as a reverse-proxy, Biblio-PAM acts as an intermediary between the university portal and the content provider web sites. The only user-visible change is in the web links, which include the address of the Biblio-PAM server.

This implies the authentication of the readers based on the directory of the institution.

All data flows are secured ; neither authentication nor resource access can be intercepted.

It is also possible to restrict access to individual resources to particular groups of users.

Finally, Biblio-PAM includes a specific management of editors.

Requirements

Access to the LDAP directory, the CAS server, or the SHIBBOLETH identity provider for user authentication and attribute retrieval.

Installation

In coordination with the customer's IT service, Alixen takes care of the whole installation process, delivering a ready-for-use system.

Development

Biblio-PAM being Free software, all customers can participate in and benefit from corrections and the development of new functionality.

Biblio-PAM allows for the integration of federated search engines.

Usage statistics tools create monthly reports.

Supported resources

Several hundreds of resources can be accessed today, and every month new ones add to this – After training provided by Alixen, the library staff can add new resources themselves, or they can change the configuration after a change of web sites.

References

BnF, Universities of Paris 2, Paris 5 Descartes, Paris 6 Pierre & Marie Curie, Paris 9, Evry, Marne-la-Vallée, Versailles-St Quentin, Angers, Toulouse 1, 2 and 3, Sciences Politiques Paris, Ecole Centrale de Paris, Supélec, FMSH, CNAM...

Advantages for the Documentation Service

- Installation : Alixen brings Biblio-PAM into service within a few days.
- Convenience : Biblio-PAM is transparent and allows the service to be put into operation without affecting the reader's behaviour or his running applications.
- Light weight: No need for any deployment on the users' computers.
- Biblio-PAM is delivered and maintained by Alixen, no complex IT system administration skills are required.